

# Engineering + Operations

## Creating an Adaptive (Resilient) Industrial Enterprise

Annemarie Breu | VP Future Automation

Alastair Orchard | VP Digital Enterprise

May 2025



WHAT TODAY'S LEADERS ARE UP AGAINST

**Markets shift overnight.**

**Supply chains break  
without warning.**

**Talent is hard to find—  
and even harder to keep.**

Yet most productions are still built for predictability,  
not volatility. **And that gap is widening.**

We need *foresight*

And the *agility* to adapt

*Before* things go wrong

## PROBLEM

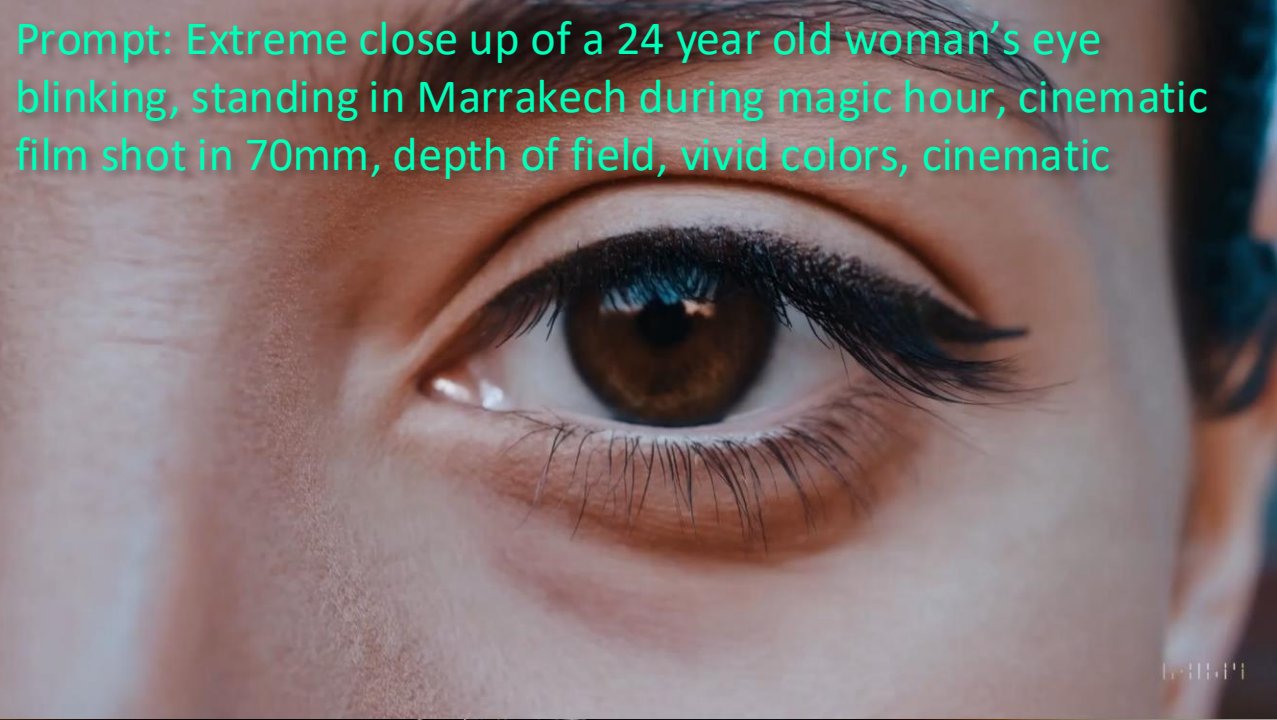
**Reality comes  
before Data...**



## SOLUTION

**Make a virtual  
world before  
you build  
anything**



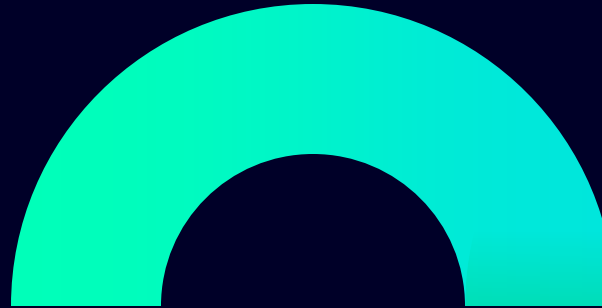




Physics is inferred,  
not calculated

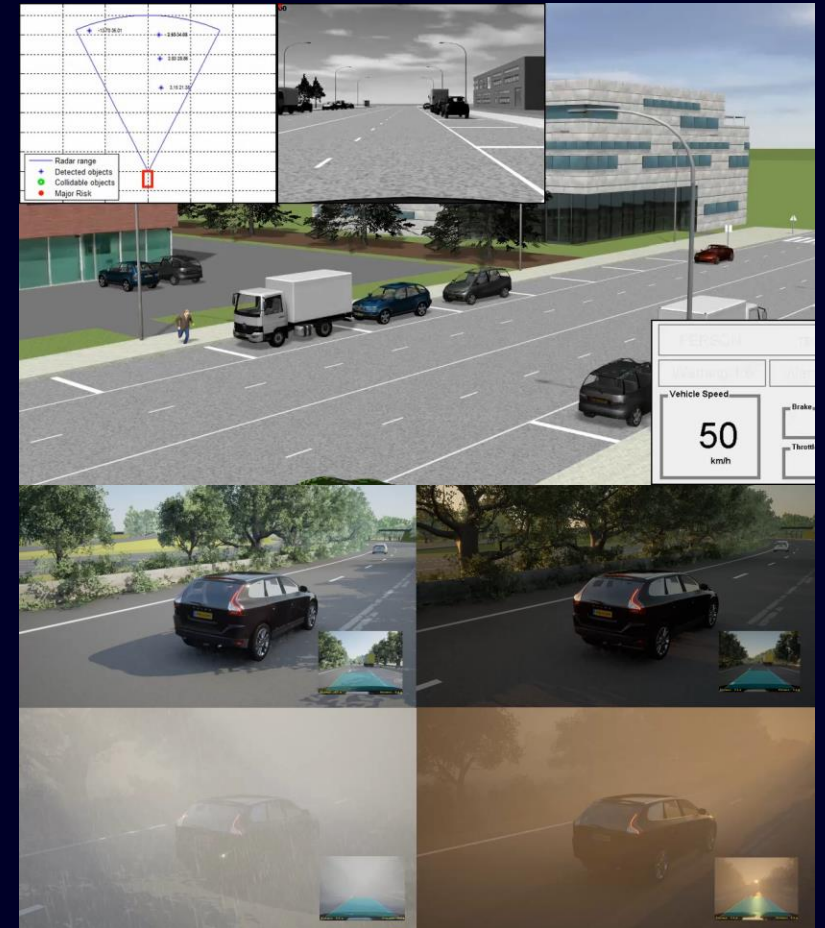


# Digital world



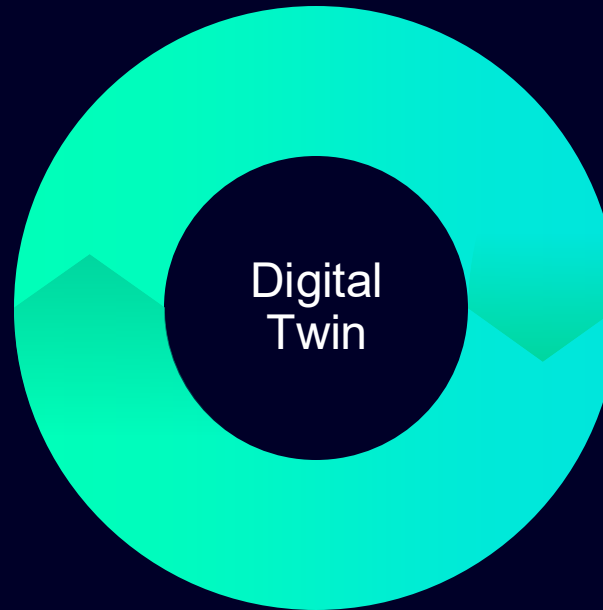
We've spent >20 years learning how to simulate reality in a Digital World.

Multi-physics simulations that scale from quantum through molecular to complex systems across all disciplines



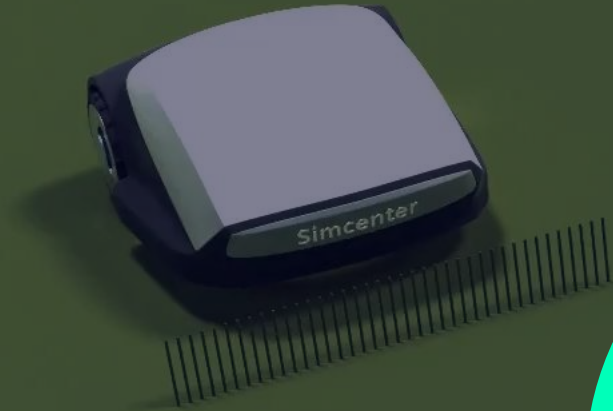


# Digital world



Our global leadership in Operations Technology allow us to connect these predictive models to the Real World, allowing us to *accelerate everything* and retain *digital agility* even as we pass from bytes to bits.

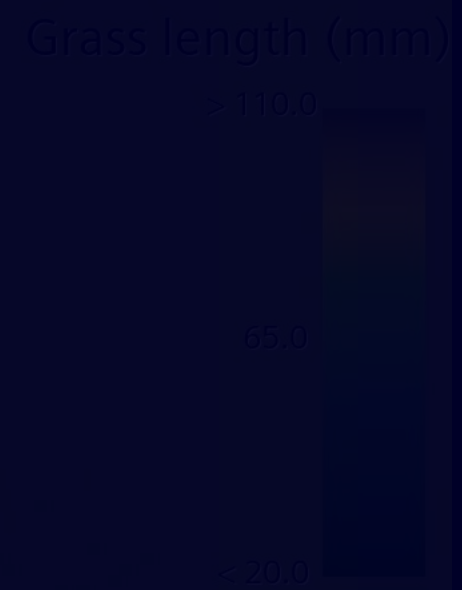
# Real world



# Digital world



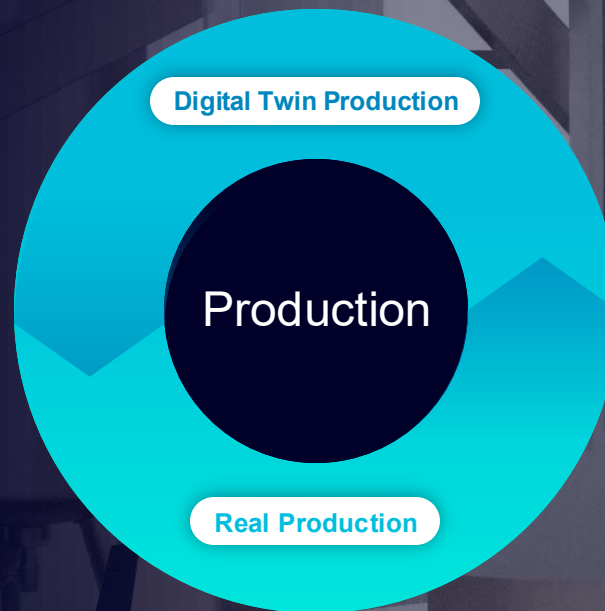
# Real world



We first applied this to product design, so our portfolio could engineer itself...

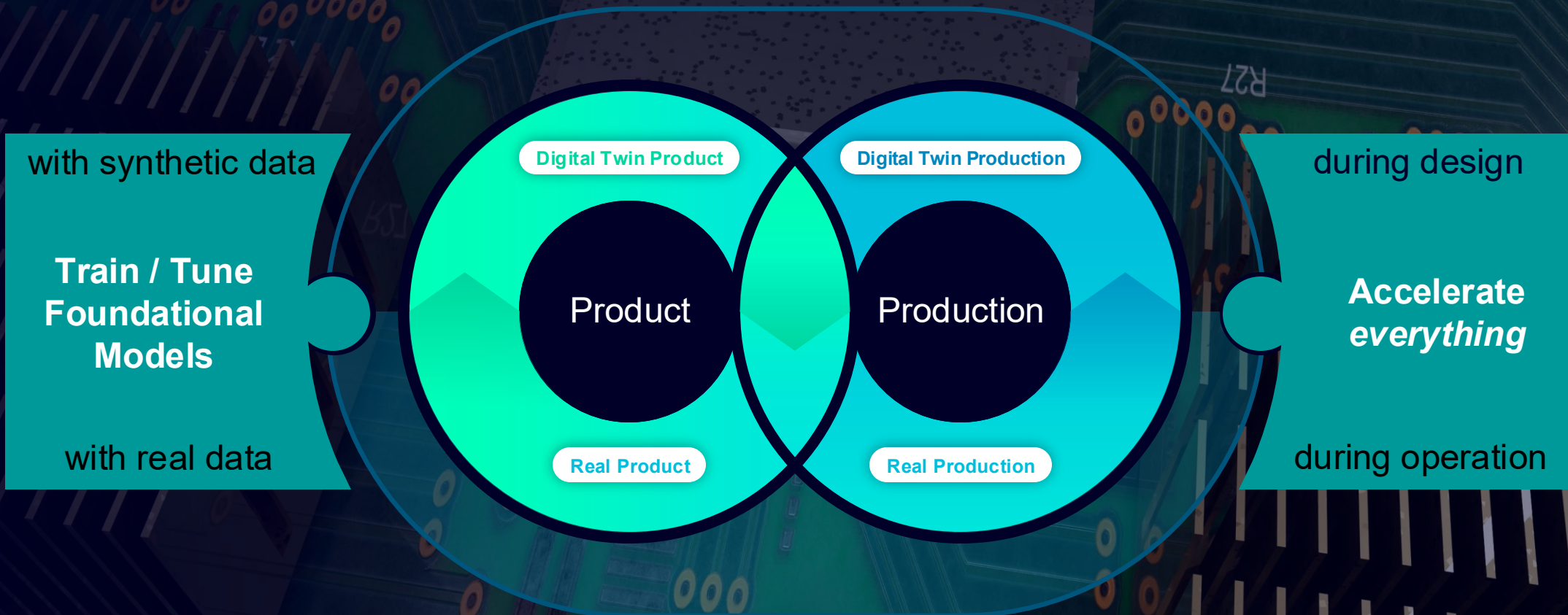


# Digital world

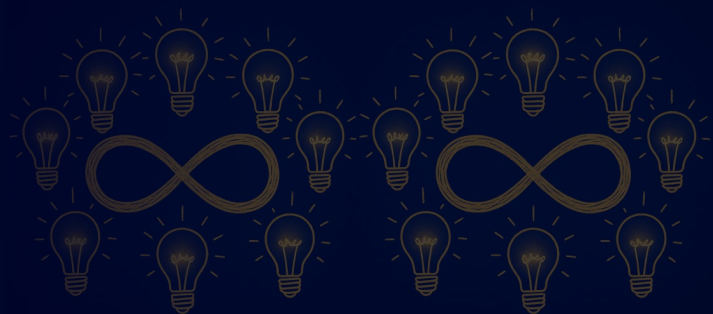


...and then we applied  
the same techniques to  
the equipment and  
processes on the  
shopfloor

# Real world

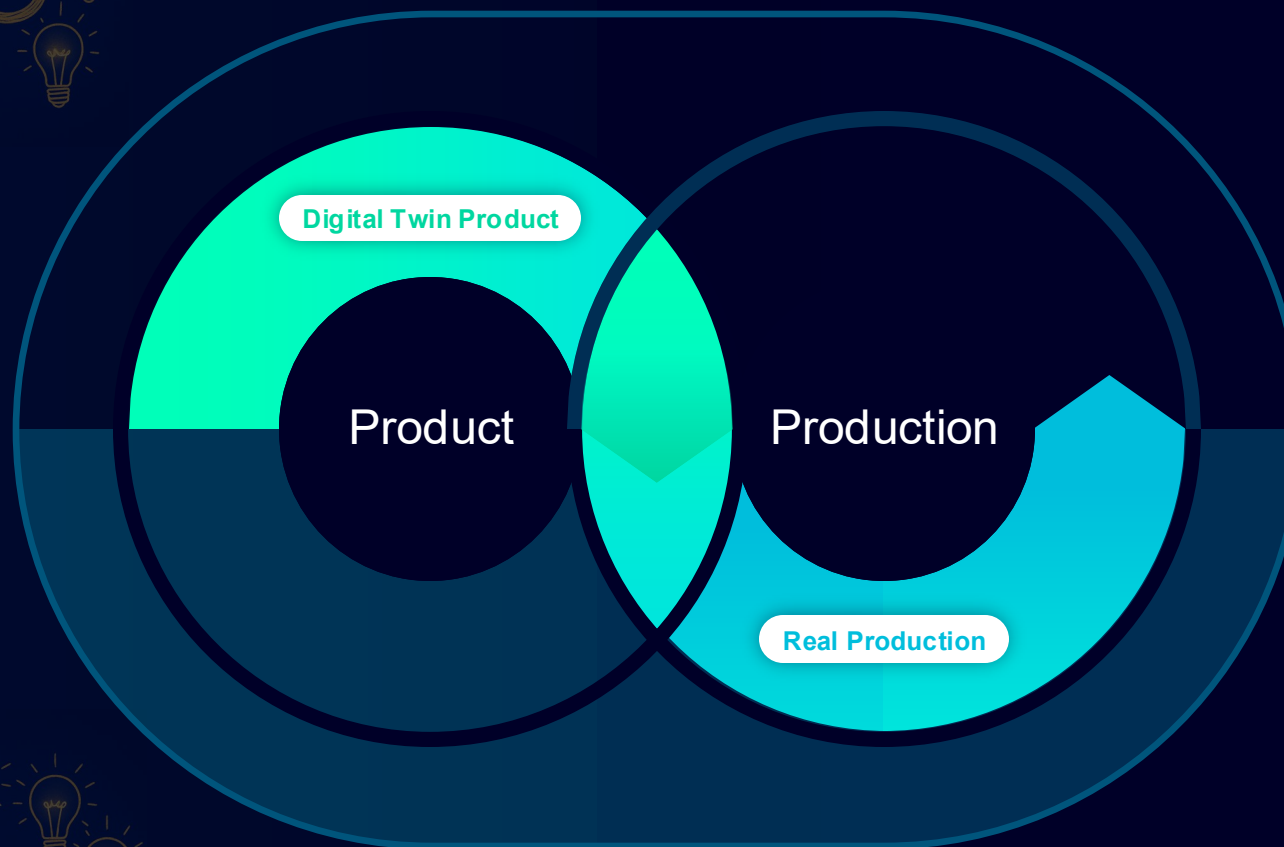
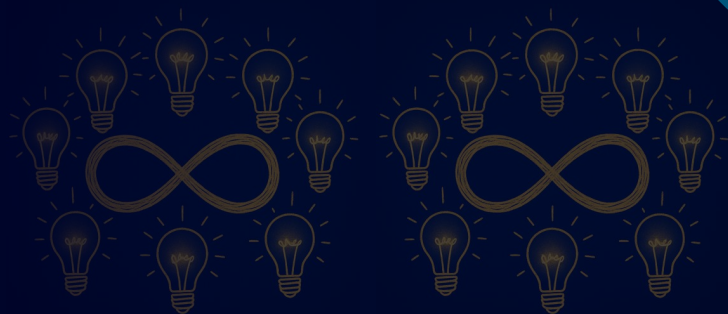






What we've got

**Infinite  
Ideas**

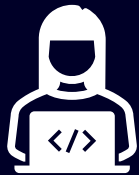


What we need

**Infinite  
Capability  
& Capacity**

...and the ability to put  
them into action

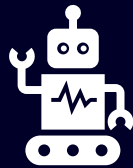
# Where Engineering meets Operations



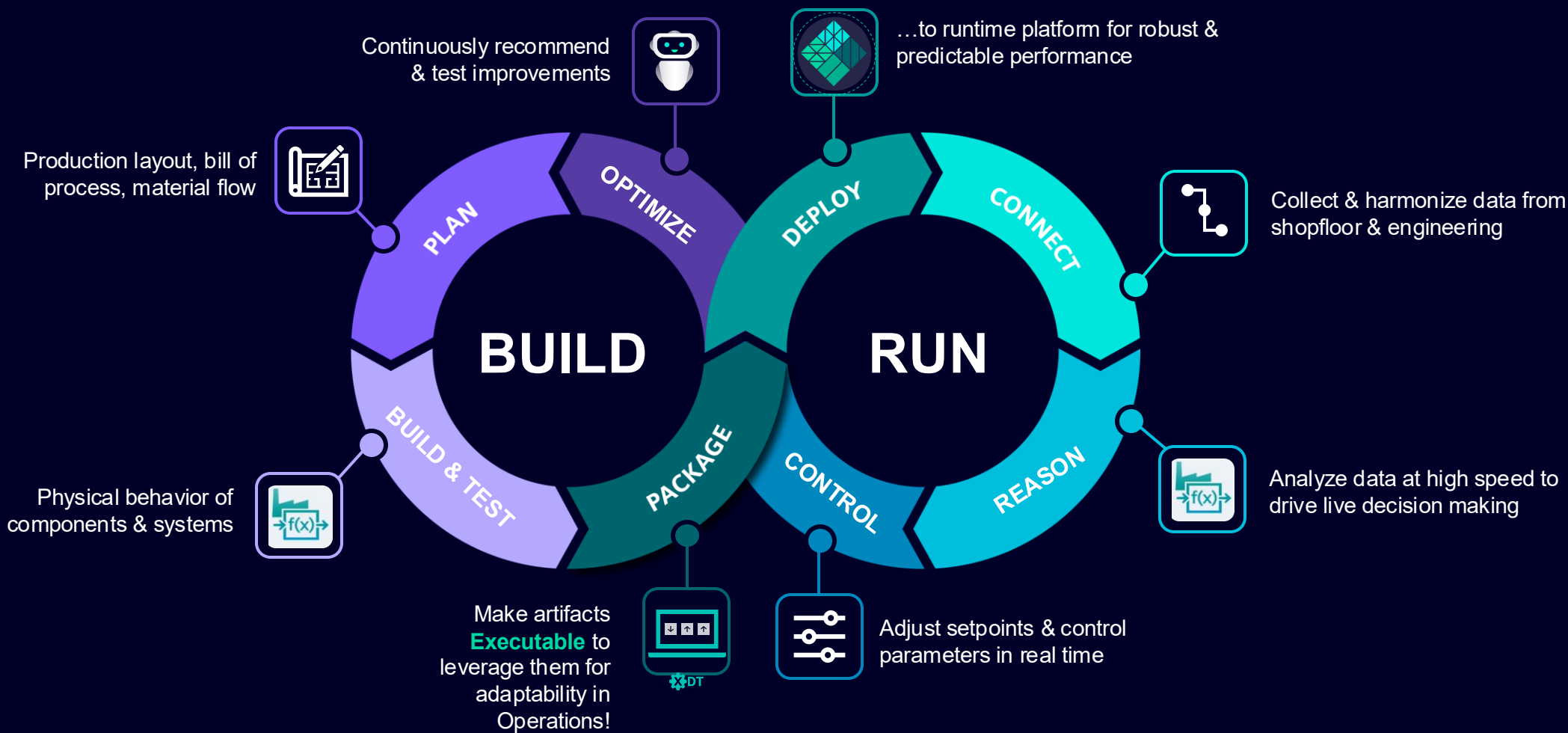
People



Process



Technology





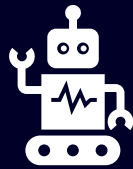
# Reuse and simplification drive efficiencies



Ease of use

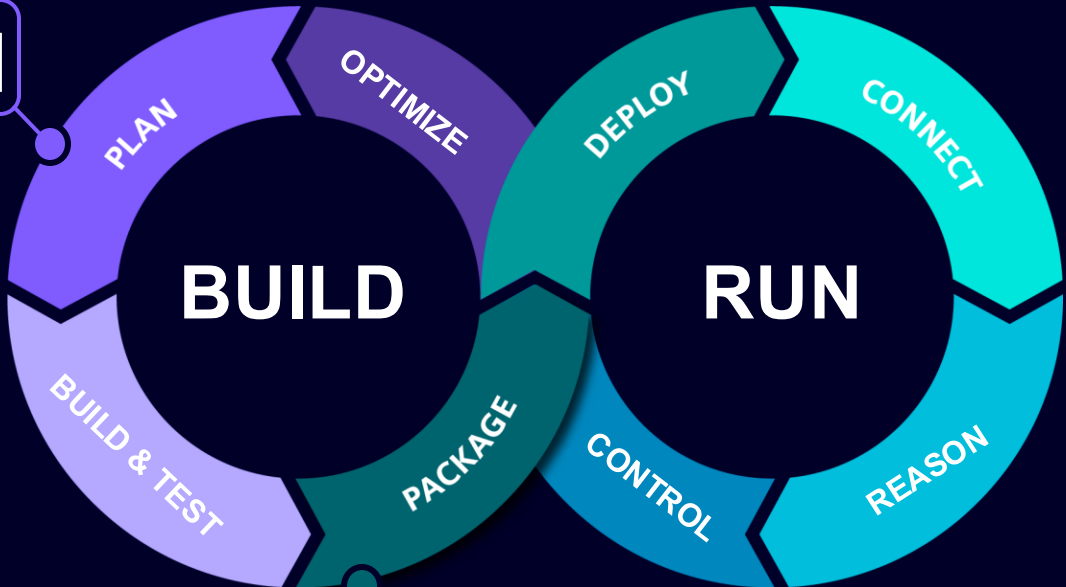


Reuse

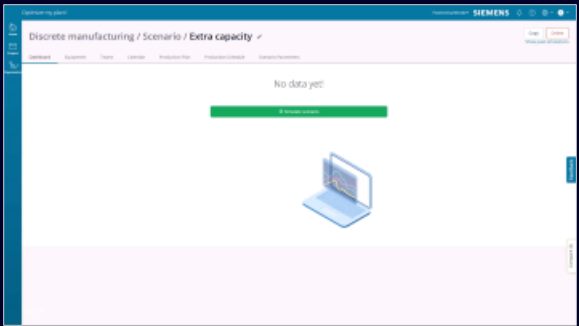


Wrapping

Production layout & material flow in planning / engineering phase

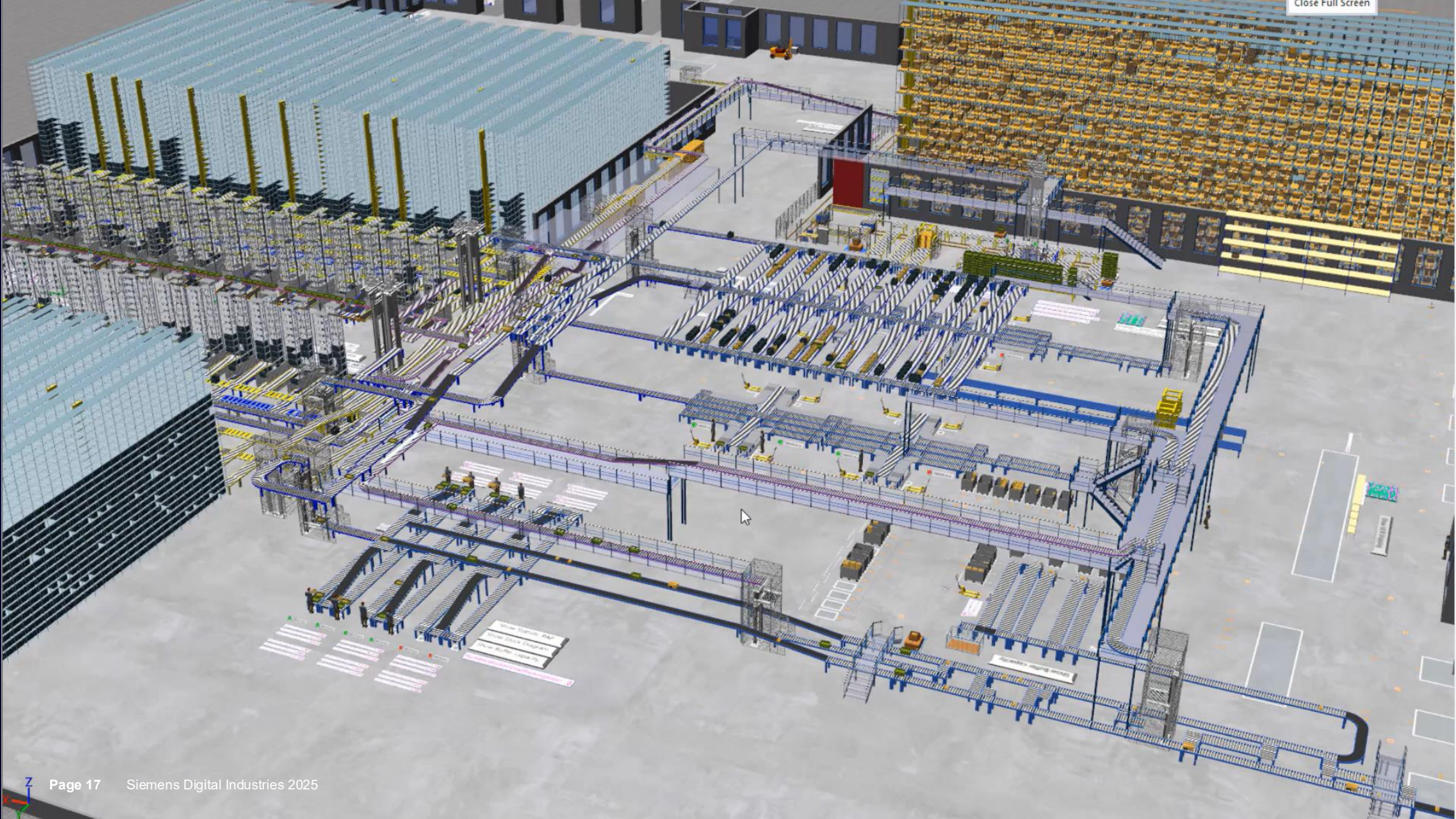


Simple view for decision making in operations



```
01100101 01111000 01100101 01100011  
01110101 01110100 01100001 01100010  
01101100 01100101 00100000 01000100  
01101001 01100111 01101001 01110100
```







# Discrete manufacturing / Scenario / Extra capacity


[Copy](#)[Delete](#)[Show past simulations](#)[Dashboard](#)[Equipment](#)[Teams](#)[Calendar](#)[Production Plan](#)[Production Schedule](#)[Scenario Parameters](#)

No data yet!

[🕒 Simulate scenario](#)[Feedback](#)[Compare \(3\)](#)

# Full integration drives flexibility

## Adaptive Asset Allocation



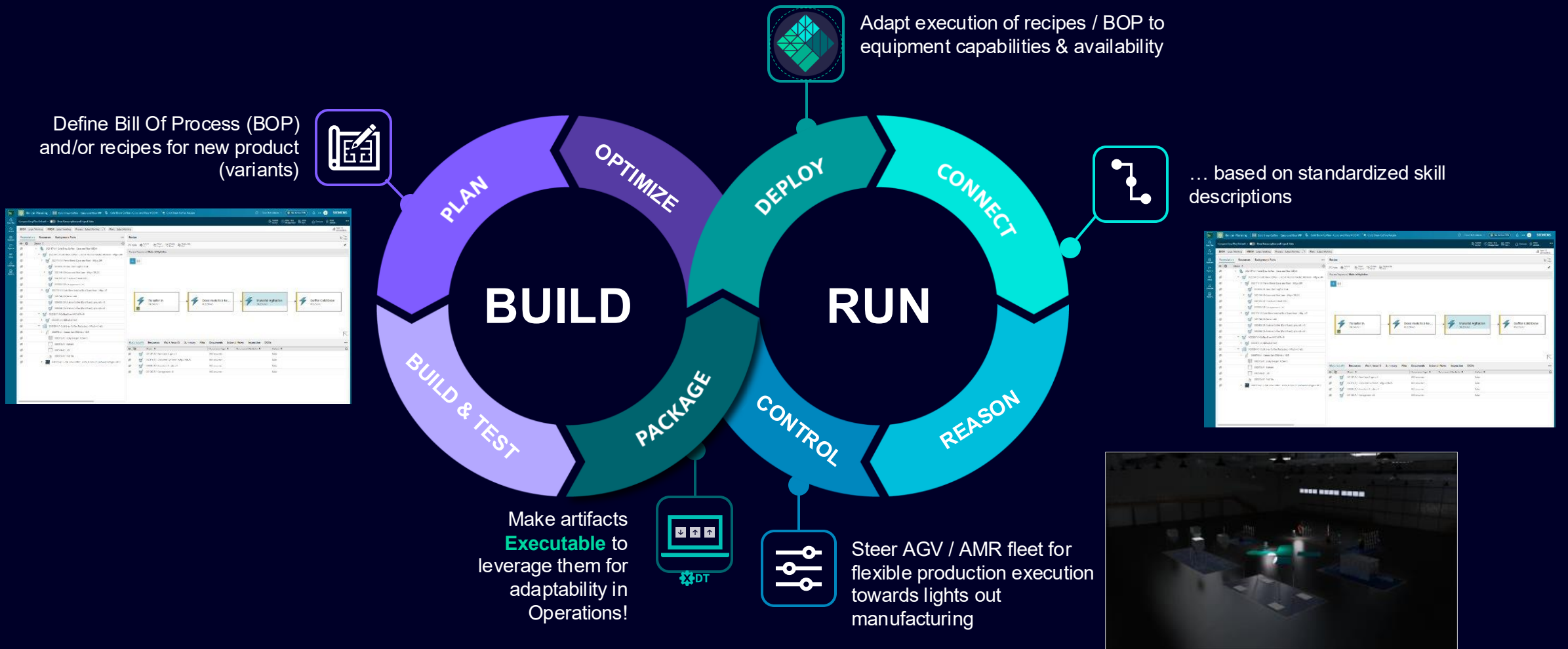
Optimize scheduling



Full integration & automation



Capability matching







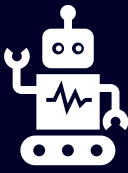
# Reuse and optimization drive process quality



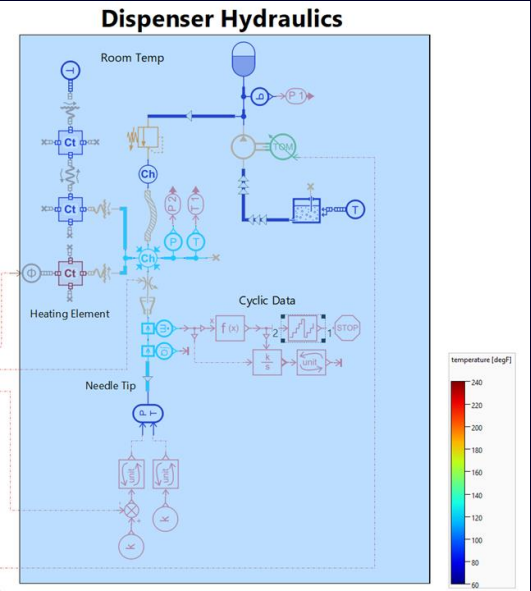
Tribal knowledge



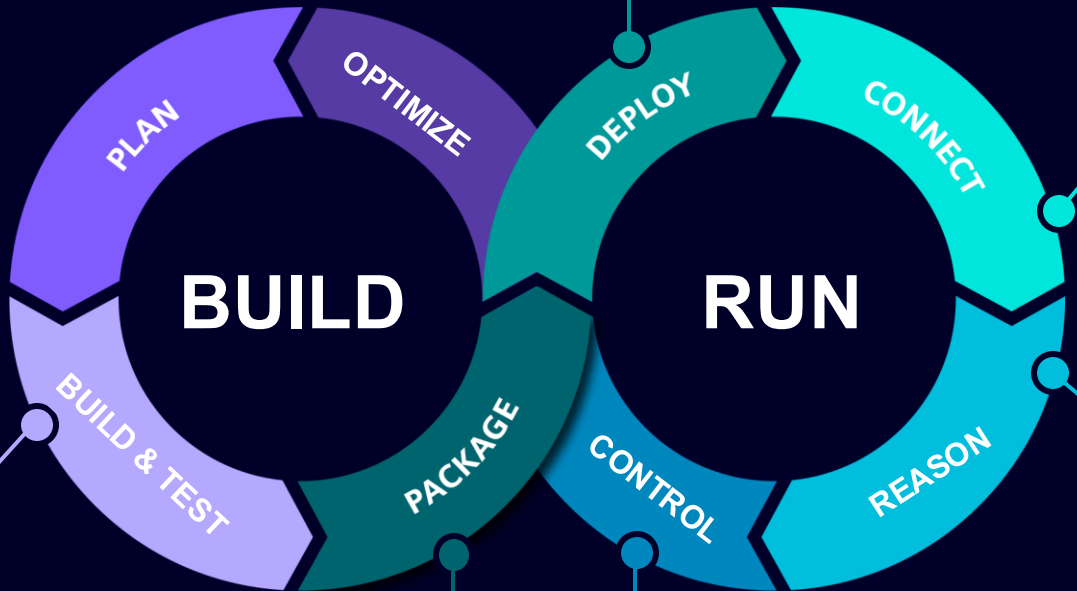
Reuse



Live Executable Digital Twin



Improve system design & commission / test virtually



Leverage the model



Extract in-service / operations data



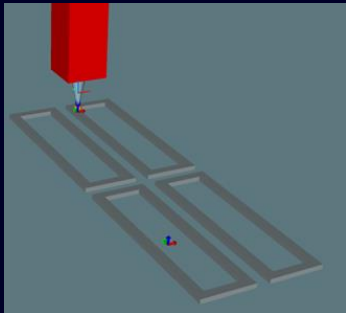
01100101 0111100001100101 01100011  
011010101 0111010001100001 01100010  
01101100 01100101 00100000 01000100  
01101001 01100111 01101001 01110101



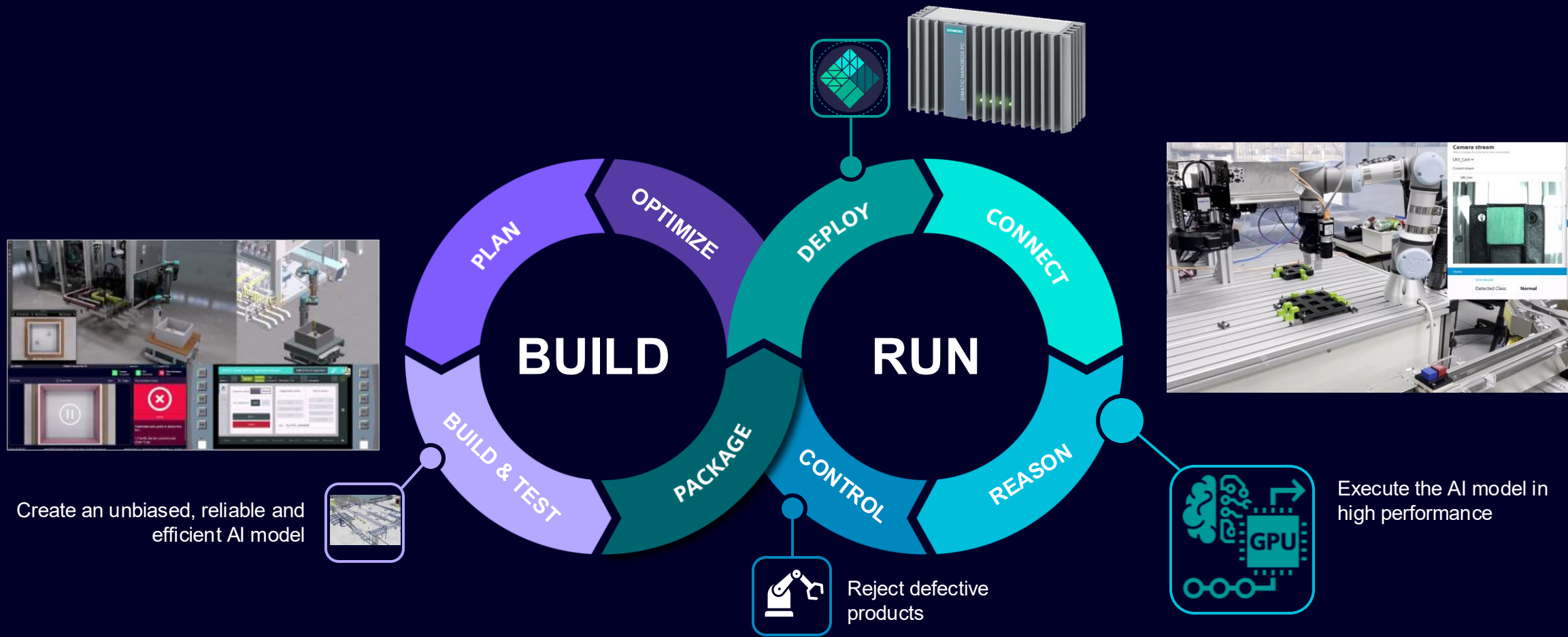
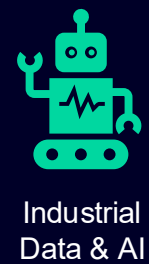
Optimize the model

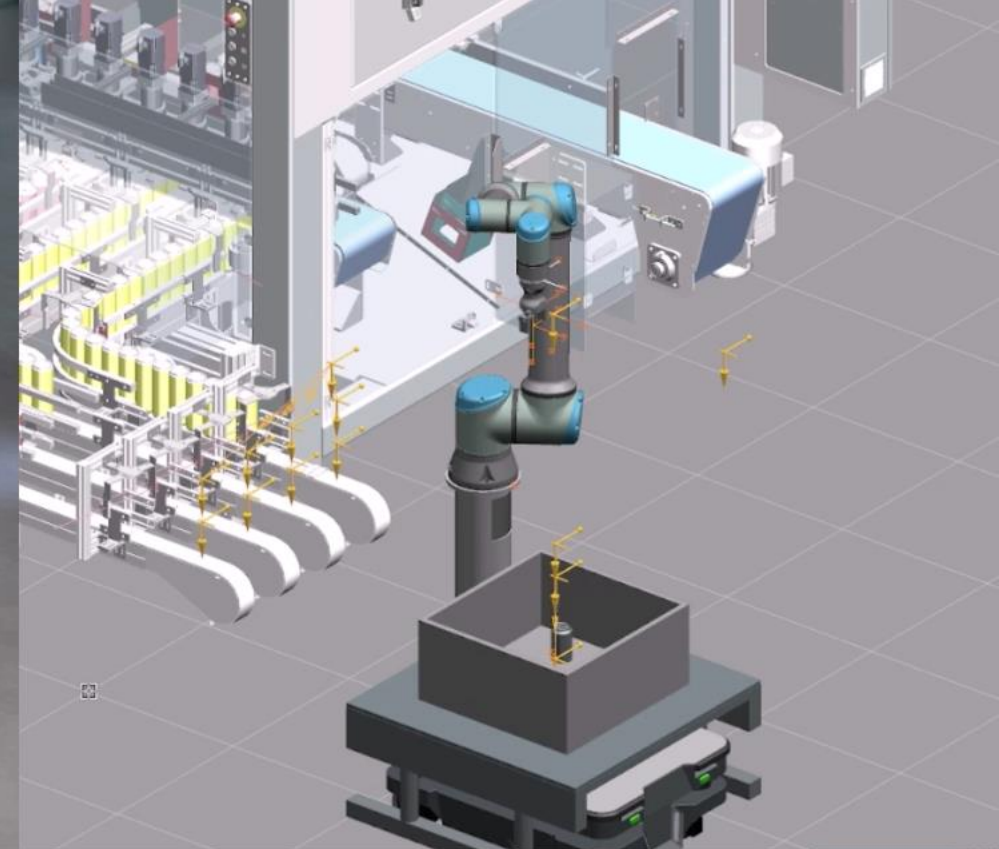
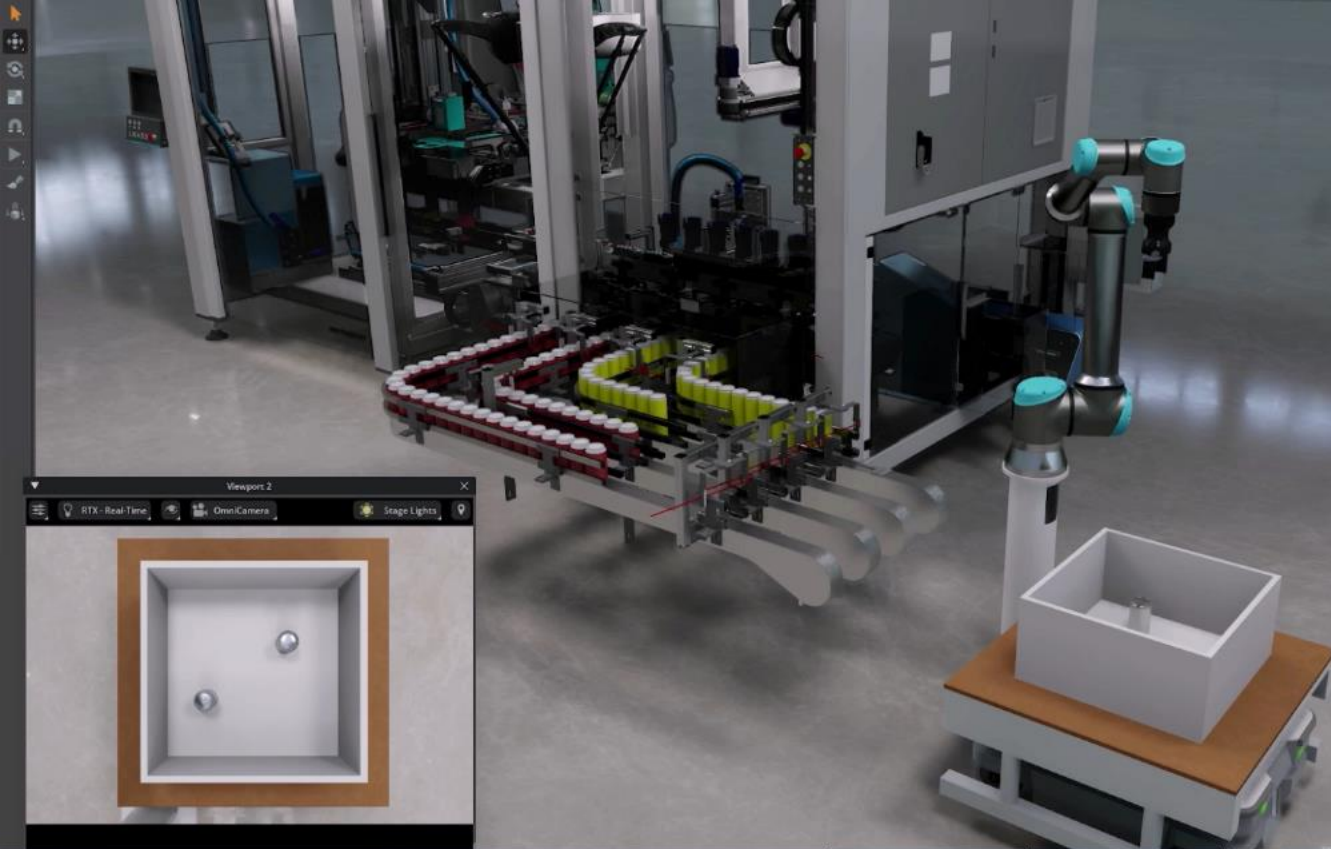


Improve glue dispensing control



# Organizations learn to **trust** AI with virtual validation





SIEMENS SIMATIC Robot Pick AI

Operator English (US)

Camera Connected PLC Connected Pick Calculation Error

Pick Point ☒ Focus View Color Depth

Pick Calculation Status

Error

Estimated pick point is above the bin.

1) Verify the bin content and clean it up.

SIMATIC Robot Pick Ai | Application Example

Robot 1 Ready AutExt In Sync Tool: 1 Frame: 0 Prim Seq 1 % Override Operator siemens

Operation Mode Manual

Run Application Start Stop

RESET Abort

Application Status

Pick AI Status

Busy

Wait for pick point

Error

Bin Empty

Calculation Successful

Error 0000

State FB\_STATE\_DISABLING

Power Move Position List Teach Path Move Path Configuration Messages



# Production Copilots make sense of lots of data to **reduce downtime**



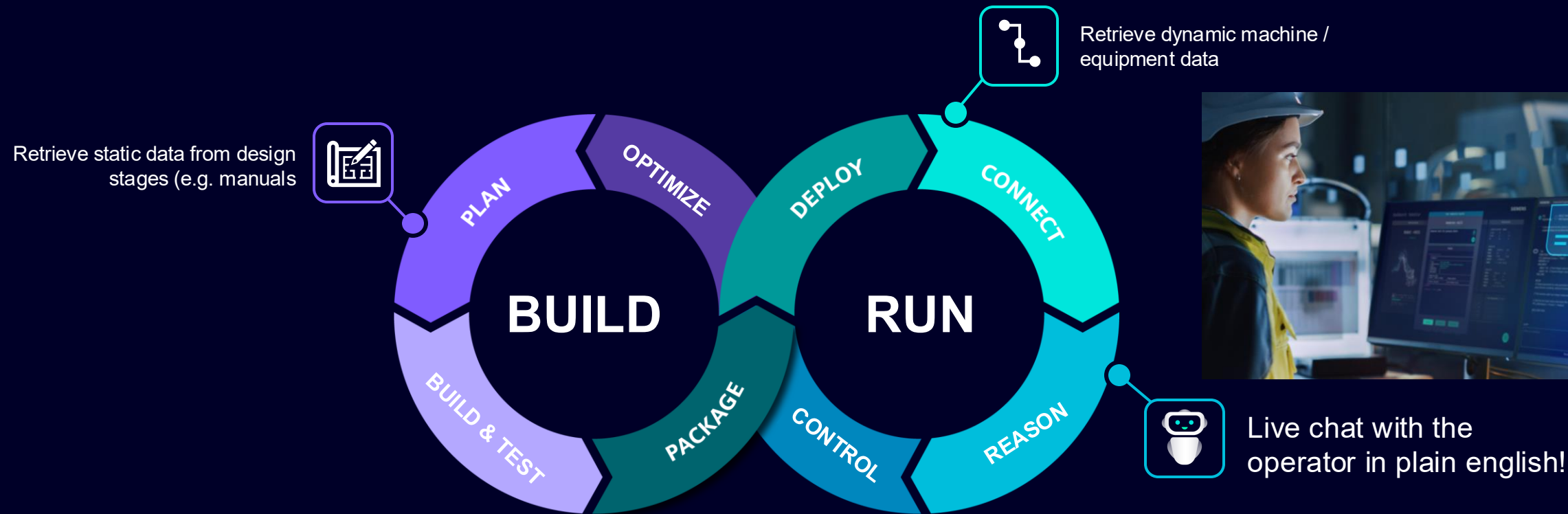
Concrete actions



Insights throughout



Operations Copilots



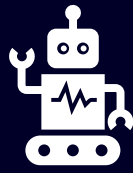
# And soon, Production Copilots will optimize operations



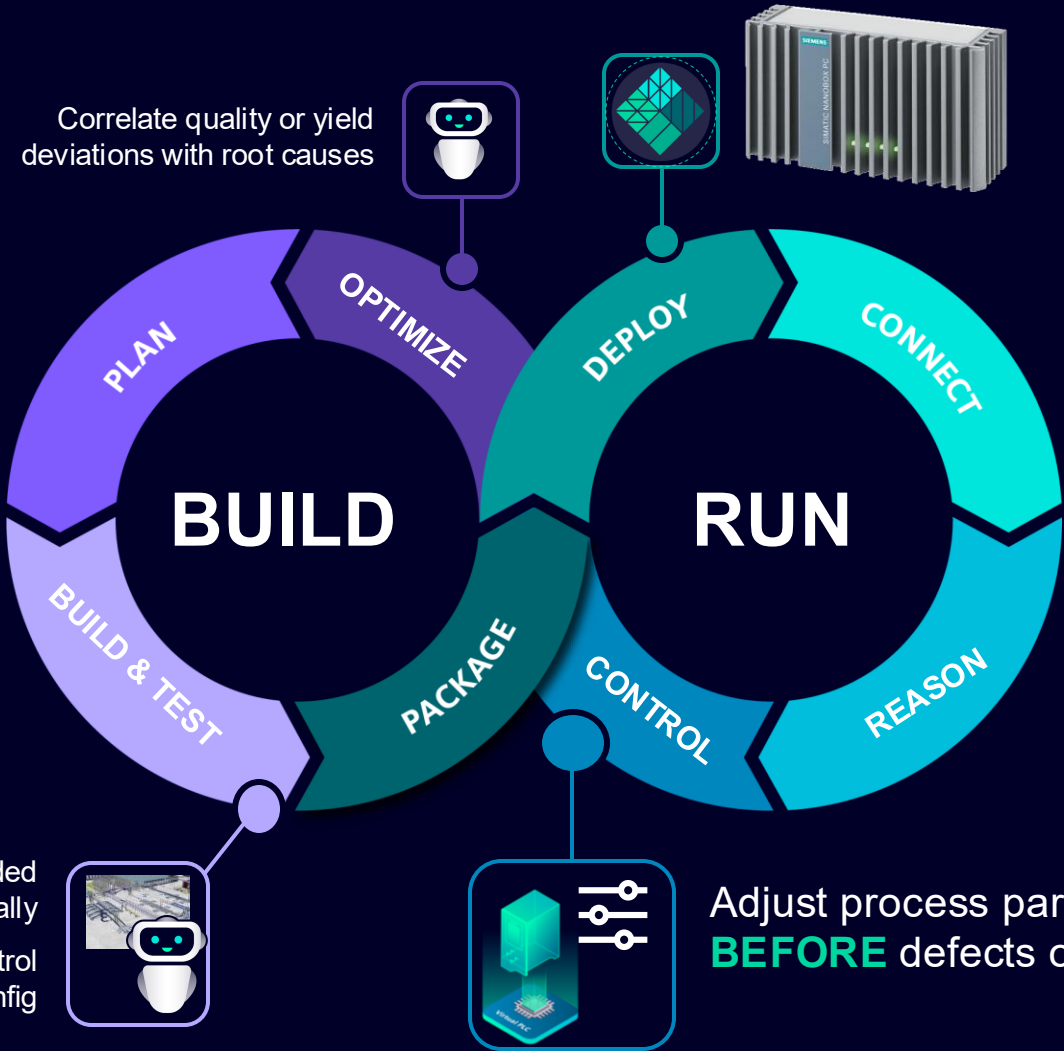
Lack of insights



Closed Loop



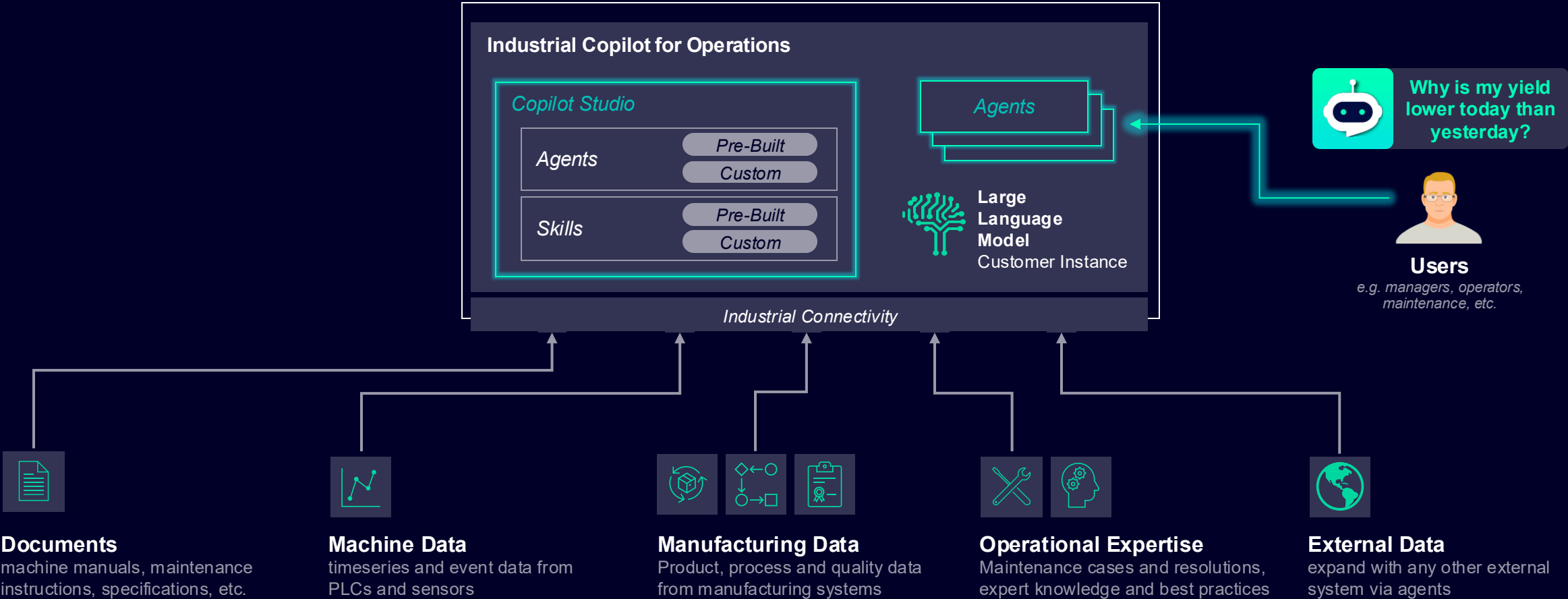
Operations Control





# AI-powered Agents in Action:

## Support day-to-day operations by integrating multiple data sources and skills



**SIEMENS**



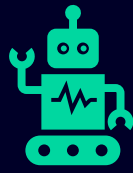
# Engineering and Operations Copilots will revolutionize industrial value generation



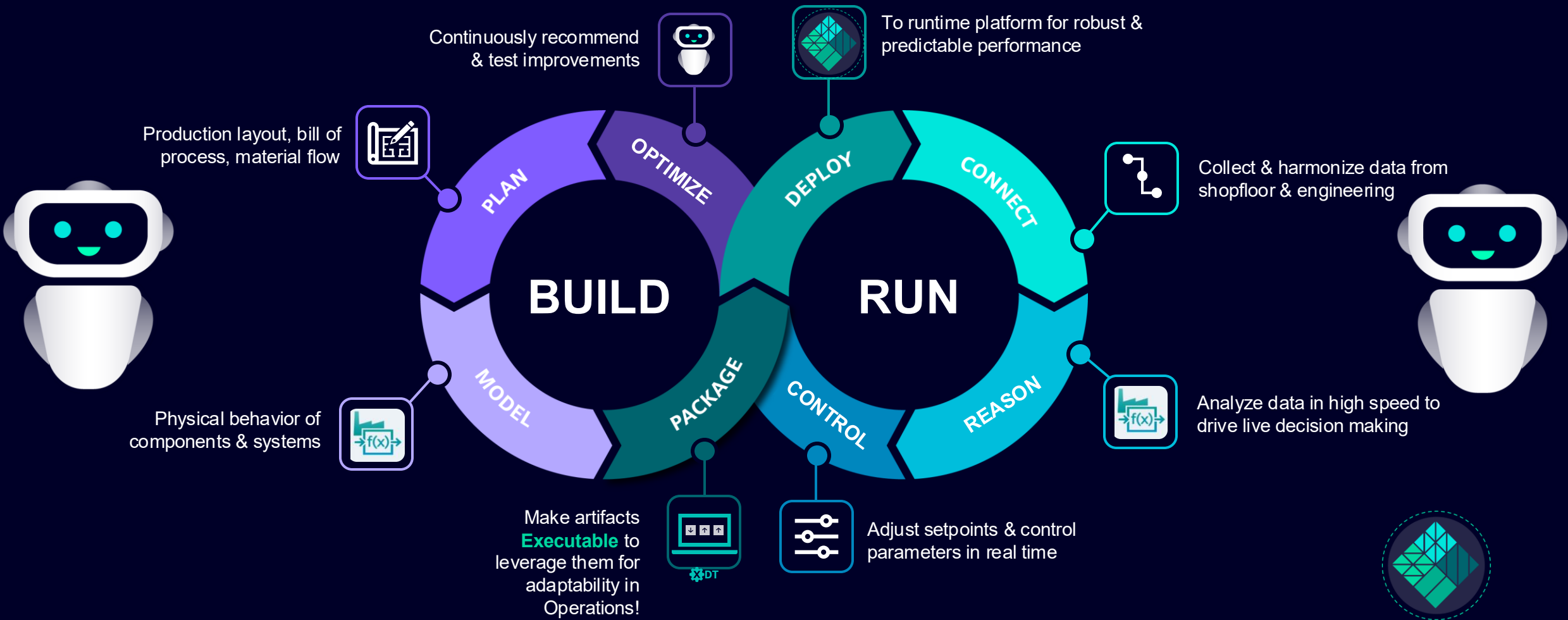
Skills, fun & efficiency



Full integration



Copilots everywhere





Don't quote me on this...



We can no longer rely solely on the Defense Industrial Base. We must distribute production to US SMEs in order to 100x our military output.



Our centralized production paradigm means 3 month lead times, 25 ton MOQs, and a supply chain that costs more and generates more carbon than our production facilities.

Creator

Buyer

COST, CARBON, COMPLEXITY

Producer

# Problem

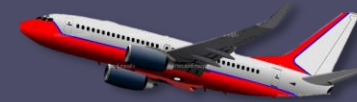
Reliance on traditional supply chains creates long lead times, supply-chain disruptions & inability to rapidly pivot / ramp up production in response to changing conditions

Creator

# Solution

What if we could move the **Producer** closer to the **Buyer** in as many transactions as possible, eliminating or shortening the Supply Chain?

Consumers



Buyer

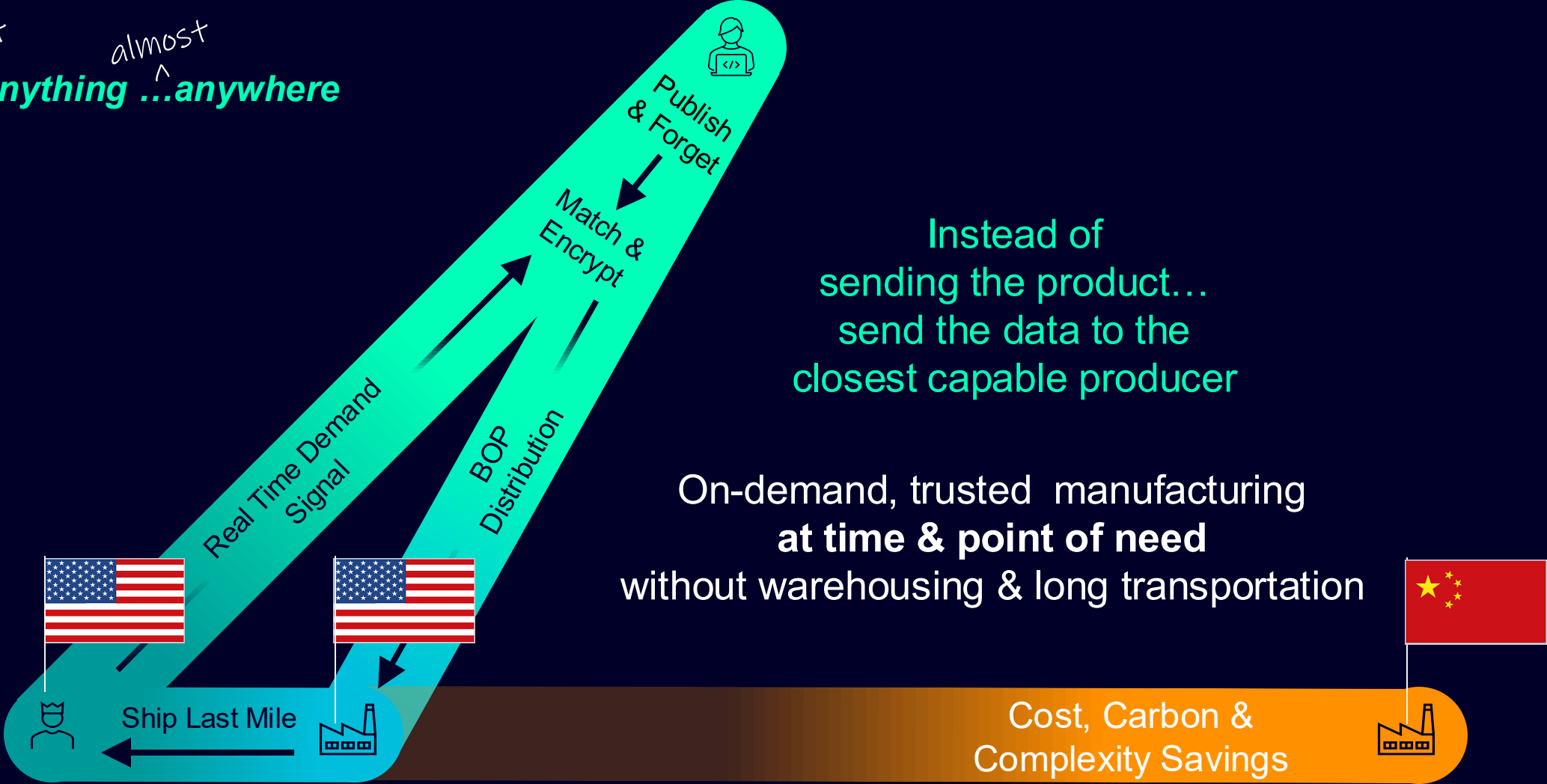
COST, CARBON, COMPLEXITY

Producer



# Distributed Manufacturing

*almost*  
**make ...anything ...anywhere**  
SM



# Thank you!

